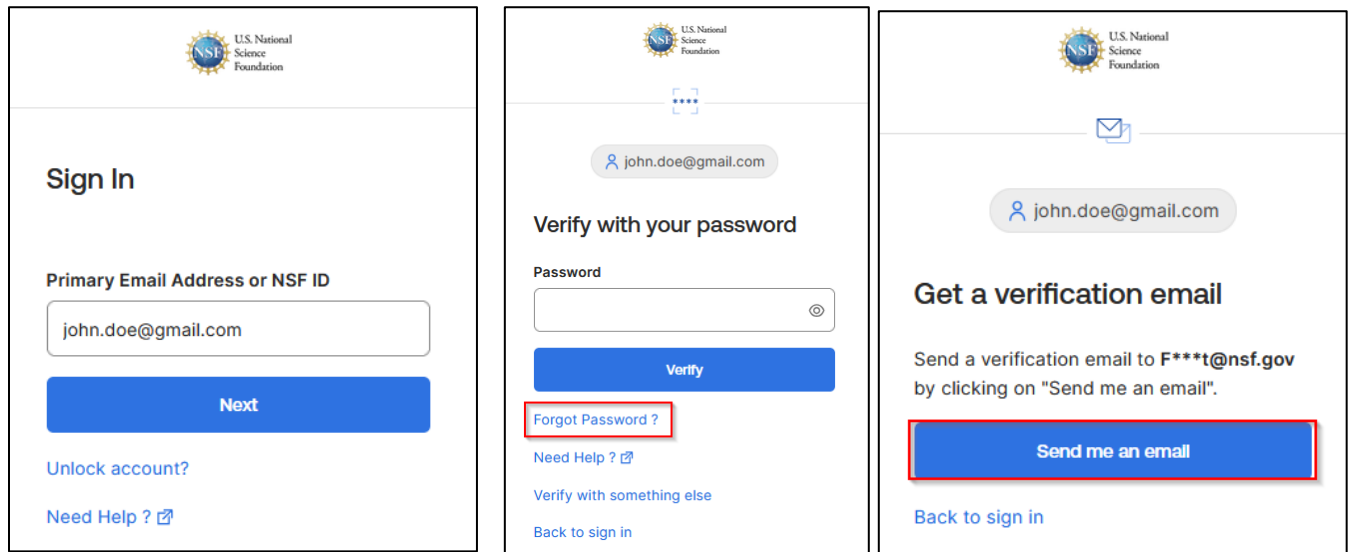


Forgot Password

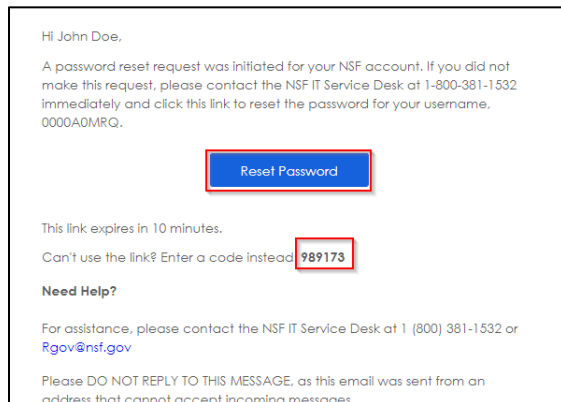
If your password has been **forgotten** and you cannot sign into Research.gov, reset it using these steps.

1. On the NSF sign-in page, enter your **Primary Email Address or NSF User ID** and select **Next**.
2. Click **Forgot Password?**.
3. Click **Send me an email**.



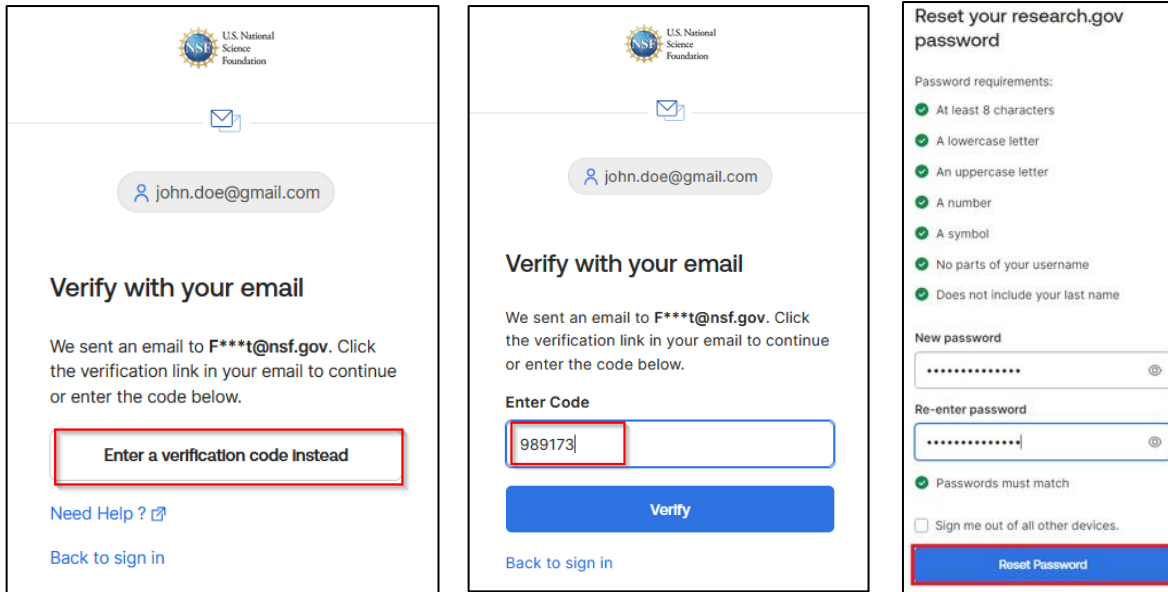
The first screenshot shows the 'Sign In' page with the NSF logo and 'U.S. National Science Foundation' text. It features a text input field for 'Primary Email Address or NSF ID' containing 'john.doe@gmail.com' and a blue 'Next' button. Below the button are links for 'Unlock account?' and 'Need Help?'. The second screenshot shows the 'Verify with your password' page with a password input field, a blue 'Verify' button, and a red box around the 'Forgot Password?' link. It also includes links for 'Need Help?', 'Verify with something else', and 'Back to sign in'. The third screenshot shows the 'Get a verification email' page with the email 'john.doe@gmail.com' and a blue 'Send me an email' button highlighted with a red box. It includes the instruction 'Send a verification email to F***t@nsf.gov by clicking on "Send me an email"' and a 'Back to sign in' link.

4. Open the email from **No-Reply <nsfextloginnoreply@nsf.gov>**
5. Click **Reset Password** in the email.



The email content includes: 'Hi John Doe.', 'A password reset request was initiated for your NSF account. If you did not make this request, please contact the NSF IT Service Desk at 1-800-381-1532 immediately and click this link to reset the password for your username, 0000A0MRQ.', a blue 'Reset Password' button highlighted with a red box, 'This link expires in 10 minutes.', 'Can't use the link? Enter a code instead' followed by a red box containing the code '989173', 'Need Help?', 'For assistance, please contact the NSF IT Service Desk at 1 (800) 381-1532 or Rgov@nsf.gov', and a footer warning: 'Please DO NOT REPLY TO THIS MESSAGE, as this email was sent from an address that cannot accept incoming messages.'

7. Enter a new password. Confirm your new password. Click **Reset Password**.
8. **Note:** If you prefer to use a code instead, you can click **Enter a verification code instead**. Enter the 6-digit code at the bottom of the Account password reset email then click **Verify**.

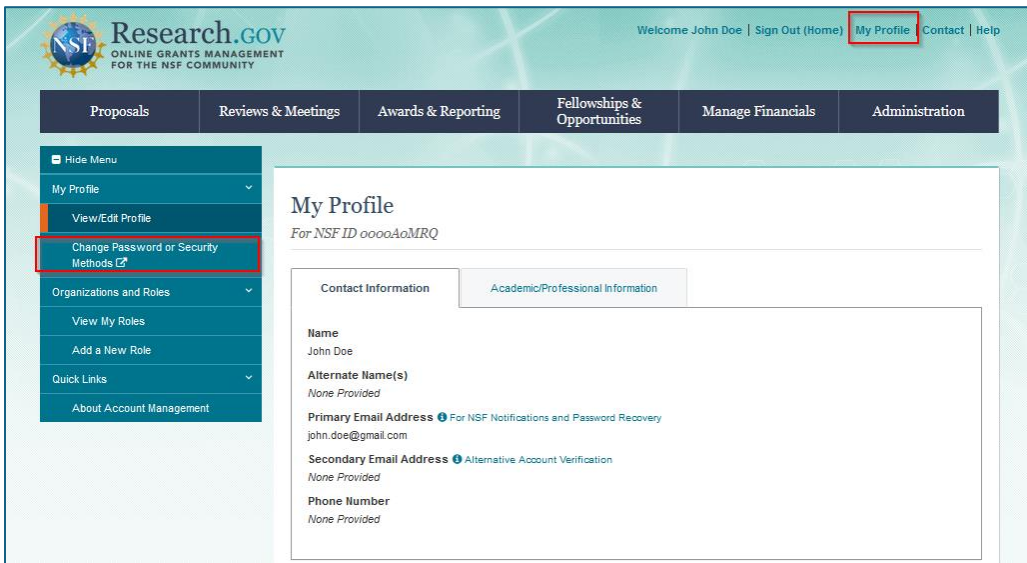


- Once you click on **Reset password**, you will need to authenticate with your security methods before you are redirected to Research.gov.

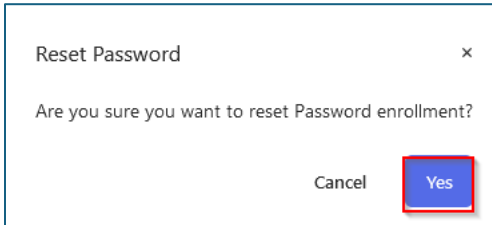
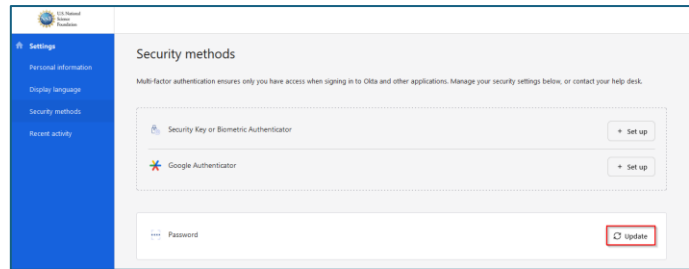
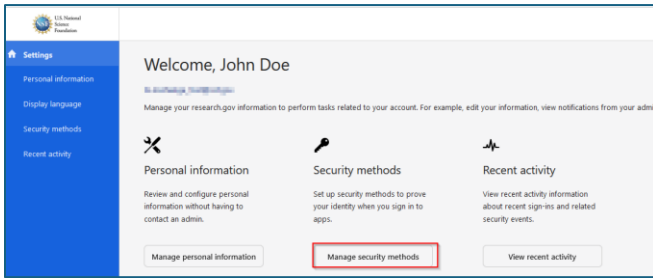
Change Password

If you wish to change your password (after you are authenticated) follow the below steps

- Navigate to **My Profile**
- Click on **Change Password or Security Methods**



- Click on **Manage security methods**
- Click on **Update** for Password and you will be prompted to confirm you want to reset the password, click **Yes**



5. You will be prompted to use your second factor for verification before you are navigated to the password reset page
6. On password reset page enter your new password and click on **Reset Password** to complete the process

