

Facial Recognition is available as a multifactor authentication (MFA) security method for all Research.gov users.

Note: Facial Recognition/Face Scan security method is only available on the Windows operating system.

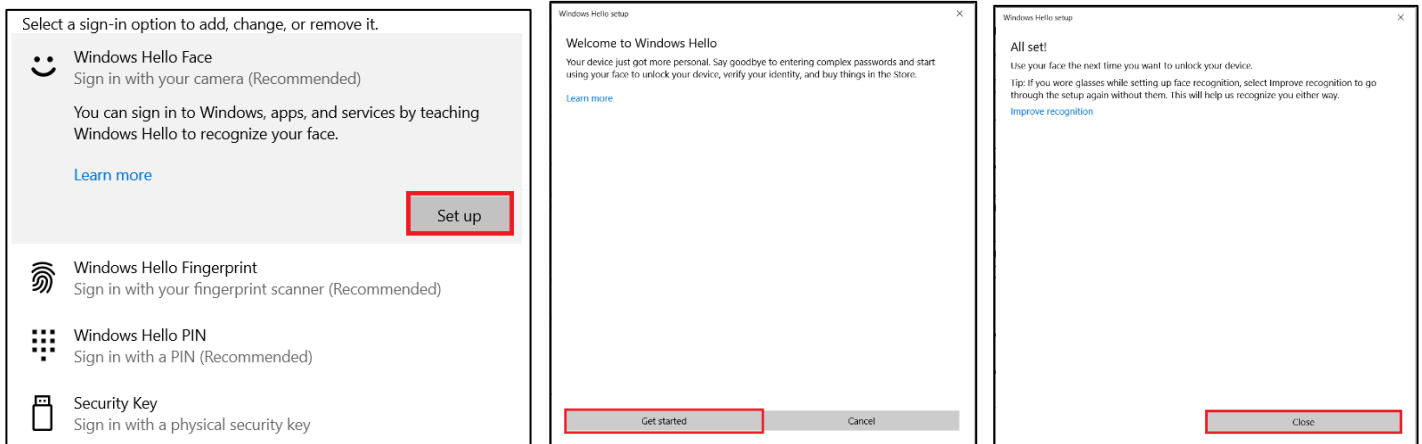
- [Facial Recognition: Before You Begin for Windows](#)
- [Facial Recognition: Verify & Setup](#)
- [Facial Recognition: Signing In](#)

Facial Recognition: Before You Begin for Windows

1. On your Windows system, navigate to **Accounts > Sign-In options**
2. Select **Windows Hello Face** and Click **Set up**.
3. Click **Get Started**.

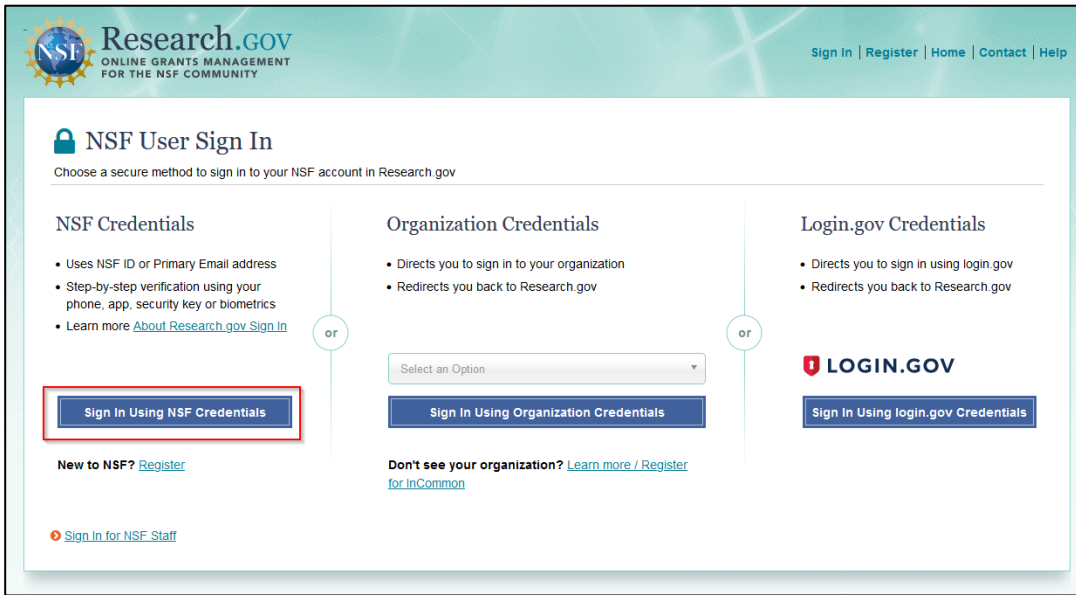
Note: Ensure the camera on your system is turned on.

4. Position your face in the center of the frame on the screen. The camera will capture your facial features. Once scanning is complete, you will see the screen shown below. Click **Close**.

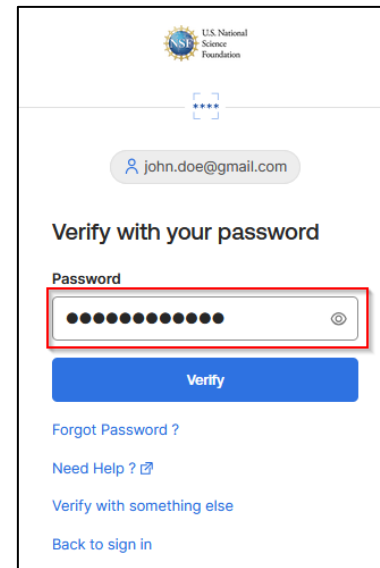
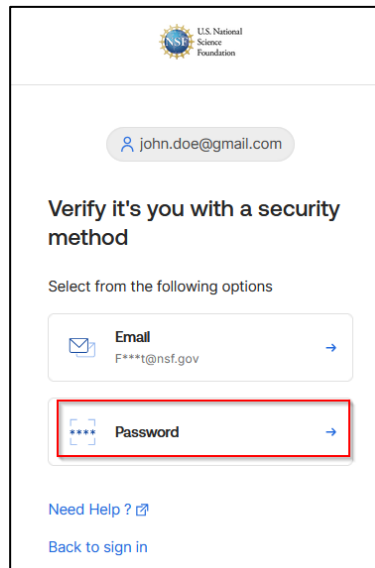
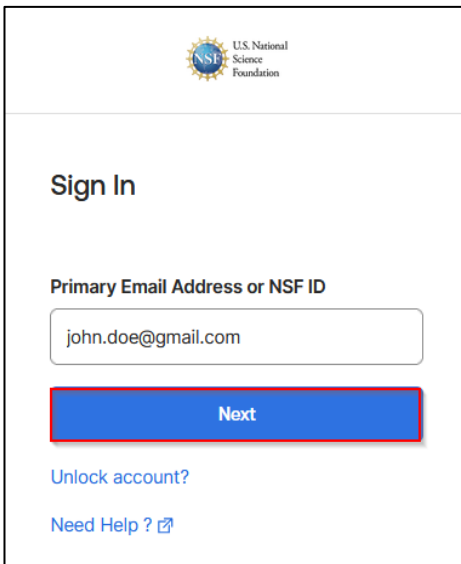


Facial Recognition: Verify & Setup

1. Open [Research.gov](https://www.research.gov)
2. Click **Sign In** located at the top of the screen to enter NSF account credentials.
3. Click **Sign In Using NSF Credentials**.



4. Enter your **primary email address or NSF ID** and click **Next**.
5. Enter your password and then click **Verify**.



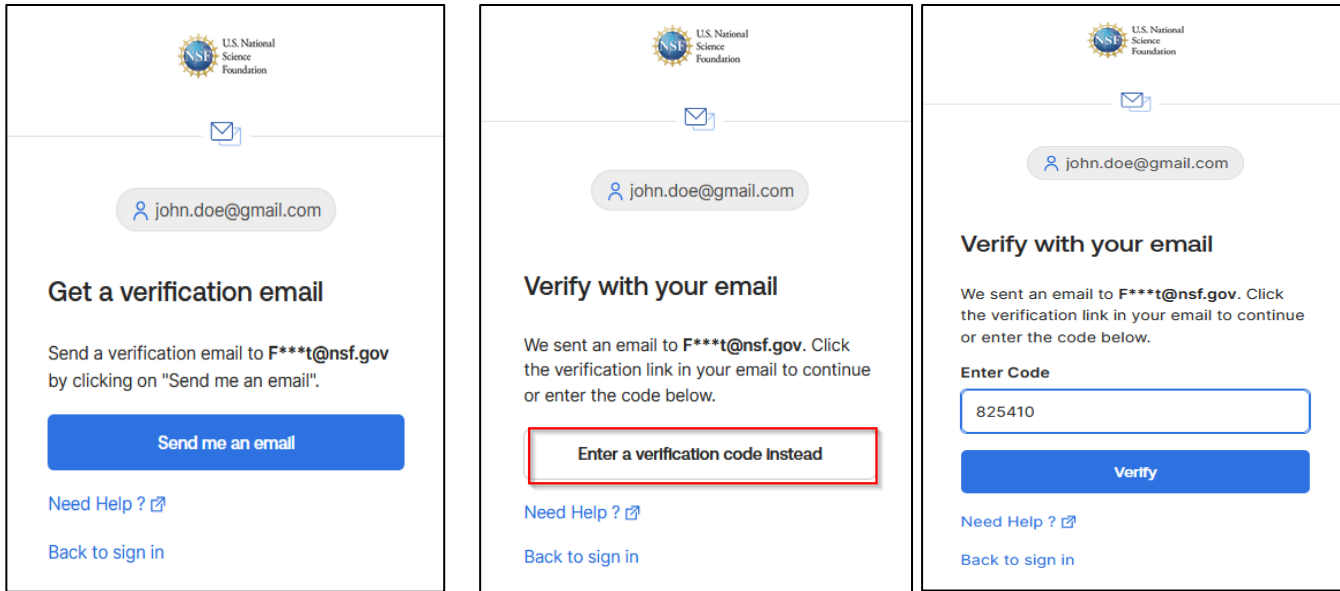
Please ensure you have access to your NSF account primary email address as you may be required to complete a validation step with a one-time passcode sent to this email.

If you are asked to verify your primary email address, please follow Steps 6-8. Otherwise, please go to Step 9.

Your email address is another form of verification used to ensure you are the account owner.

6. Click **Send me an email**.
7. Once you click on **Send me an email**, you will receive a **one-time verification code** email from nsfextloginnoreply@nsf.gov to your primary email address you used when you registered for an NSF account in Research.gov.

Note: If you prefer to use a code instead, you can click **Enter a verification code instead**. Enter the 6-digit code at the bottom of the Account password reset email then click **Verify**.

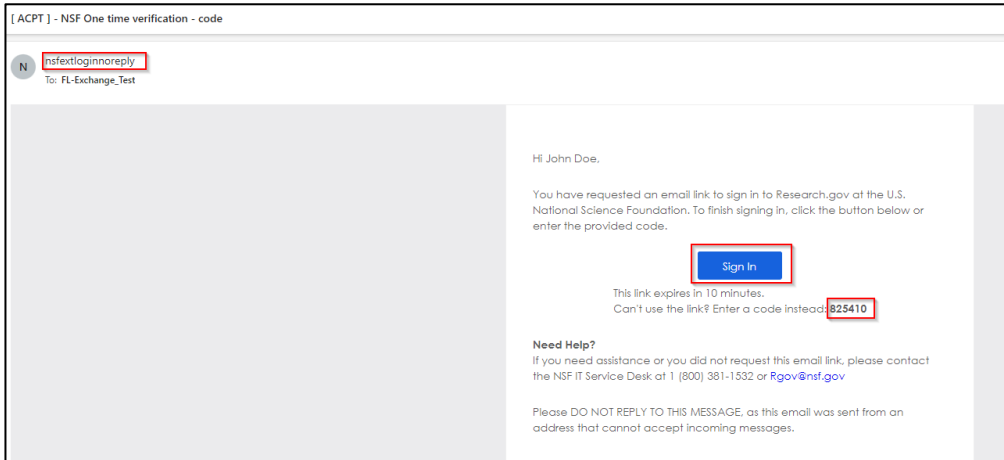


The first screenshot shows the 'Get a verification email' step. It includes the NSF logo, an email icon, the user's email 'john.doe@gmail.com', and a blue button labeled 'Send me an email'. Below the button are links for 'Need Help?' and 'Back to sign in'.

The second screenshot shows the 'Verify with your email' step. It includes the NSF logo, an email icon, the user's email 'john.doe@gmail.com', and a blue button labeled 'Enter a verification code instead' which is highlighted with a red border. Below the button are links for 'Need Help?' and 'Back to sign in'.

The third screenshot shows the 'Verify with your email' step. It includes the NSF logo, an email icon, the user's email 'john.doe@gmail.com', and a blue button labeled 'Verify'. Above the button is a text input field containing the code '825410'. Below the button are links for 'Need Help?' and 'Back to sign in'.

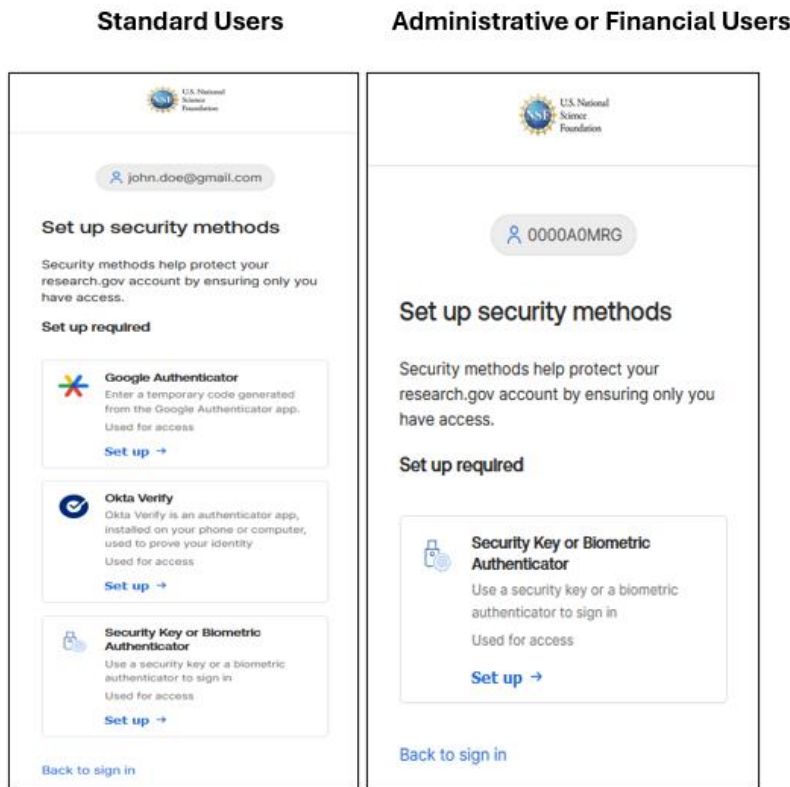
- Click **Sign In** from the email. After you click **Sign In**, you will be required to set up an additional security method. (The available security methods that display depend on your role(s) in Research.gov.)



The screenshot shows an email interface with the following details:

- Subject: [ACPT] - NSF One time verification - code
- From: nsfextloginnoreply
- To: FL-Exchange_Test
- Body:
 - Greeting: Hi John Doe.
 - Message: You have requested an email link to sign in to Research.gov at the U.S. National Science Foundation. To finish signing in, click the button below or enter the provided code.
 - Action: A blue button labeled 'Sign In' is highlighted with a red border.
 - Expiration: This link expires in 10 minutes.
 - Alternative: Can't use the link? Enter a code instead: 825410 (the code is highlighted with a red border).
 - Need Help?: If you need assistance or you did not request this email link, please contact the NSF IT Service Desk at 1 (800) 381-1532 or Rgov@nsf.gov.
 - Disclaimer: Please DO NOT REPLY TO THIS MESSAGE, as this email was sent from an address that cannot accept incoming messages.

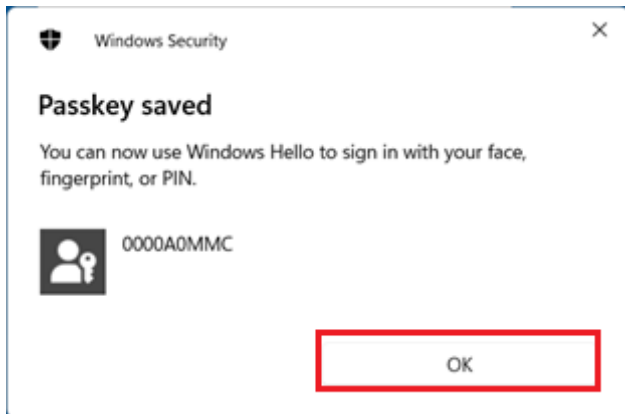
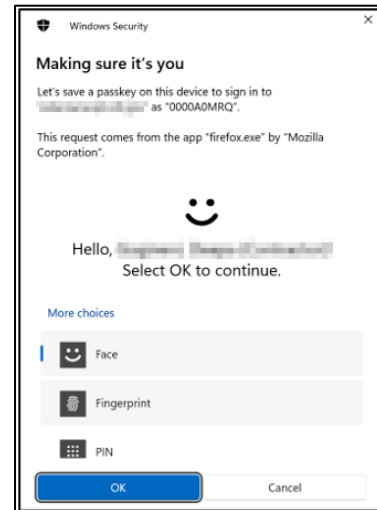
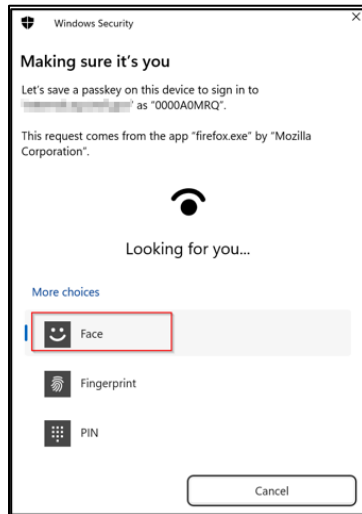
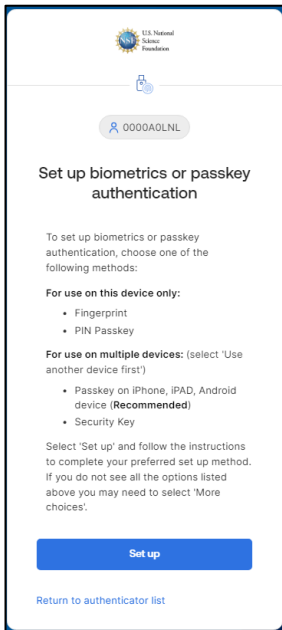
9. The Set-up security methods menu appears.
10. From the browser, click **Set up** under **Security Key or Biometric Authenticator** from the **Set up security methods** screen.
11. Click **Set up**.



12. Select **More choices**.
13. Select **Face**. Once your camera has detected your face, click **OK**.
14. Click **OK**.

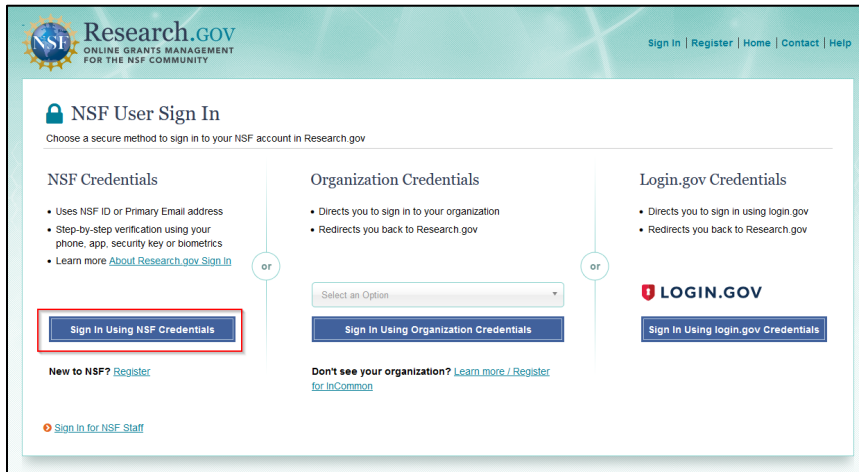
Note: Depending on your role in Research.gov, you may be prompted to set up additional security methods. If you choose not to do so at this time, click **Continue**.

15. You will be authenticated and navigated to the application you are trying to access.

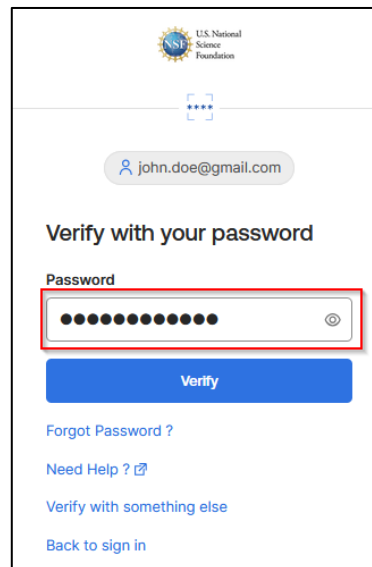
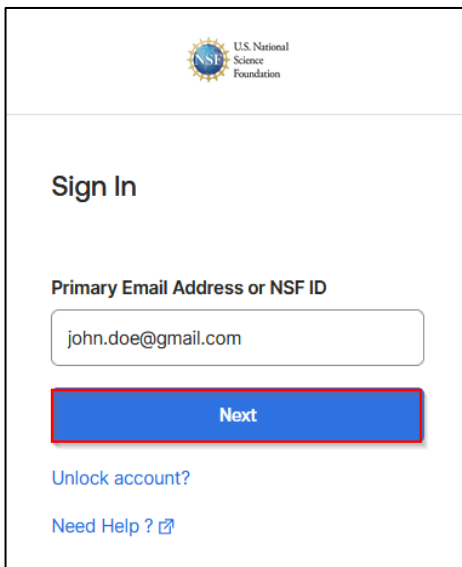


Facial Recognition: Signing In

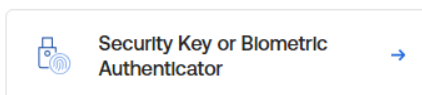
1. Open [Research.gov](https://www.research.gov)
2. Click **Sign In** located at the top of the screen to enter NSF account credentials.
3. Click **Sign In Using NSF Credentials**.



4. Enter your **primary email address or NSF ID** and click **Next**.
5. Enter your password then click **Verify**.



6. Select **Security Key or Biometric Authenticator** to use the facial recognition option. If you do not see the Face option, select More choices.



7. Select **Face**.
8. Ensure your camera device is turned on.
9. Position your face in front of your camera device.
10. Once your camera has recognized your face, you will be prompted to click **OK**.
11. Once you click **OK**, you will be authenticated and navigated to the application you are trying to access.

Facial Recognition (Windows Hello Face) Setup and Login

